

- Portable Appliance Testing Solutions
- Installation Testing Solutions
- High Voltage Testing Solutions



Experts in what we do.



In safety testing, the bottom line is human life. So it's our business to know your work inside out. As part of your team, with the best technology. Welcome to Total Test Solutions.





PAT

Total Test Solutions.

Contents

- 04 - 05 PAT System
- 06 - 07 PAT Software
- 08 - 09 Test n Tag System
- 10 - 11 Professional Advice
- 12 - 13 PAT Guide
- 14 - 15 PrimeTest 350
- 16 - 17 Supernova Elite
- 18 - 19 Europa Plus
- 20 - 21 PrimeTest 250
- 22 - 23 PrimeTest 100
- 24 - 25 PrimeTest 50
- 26 - 27 PATGuard 2 Software
- 28 - 29 PATGuard 2 Software
- 30 - 31 Accessories
- 32 - 33 Test n Tag Printers

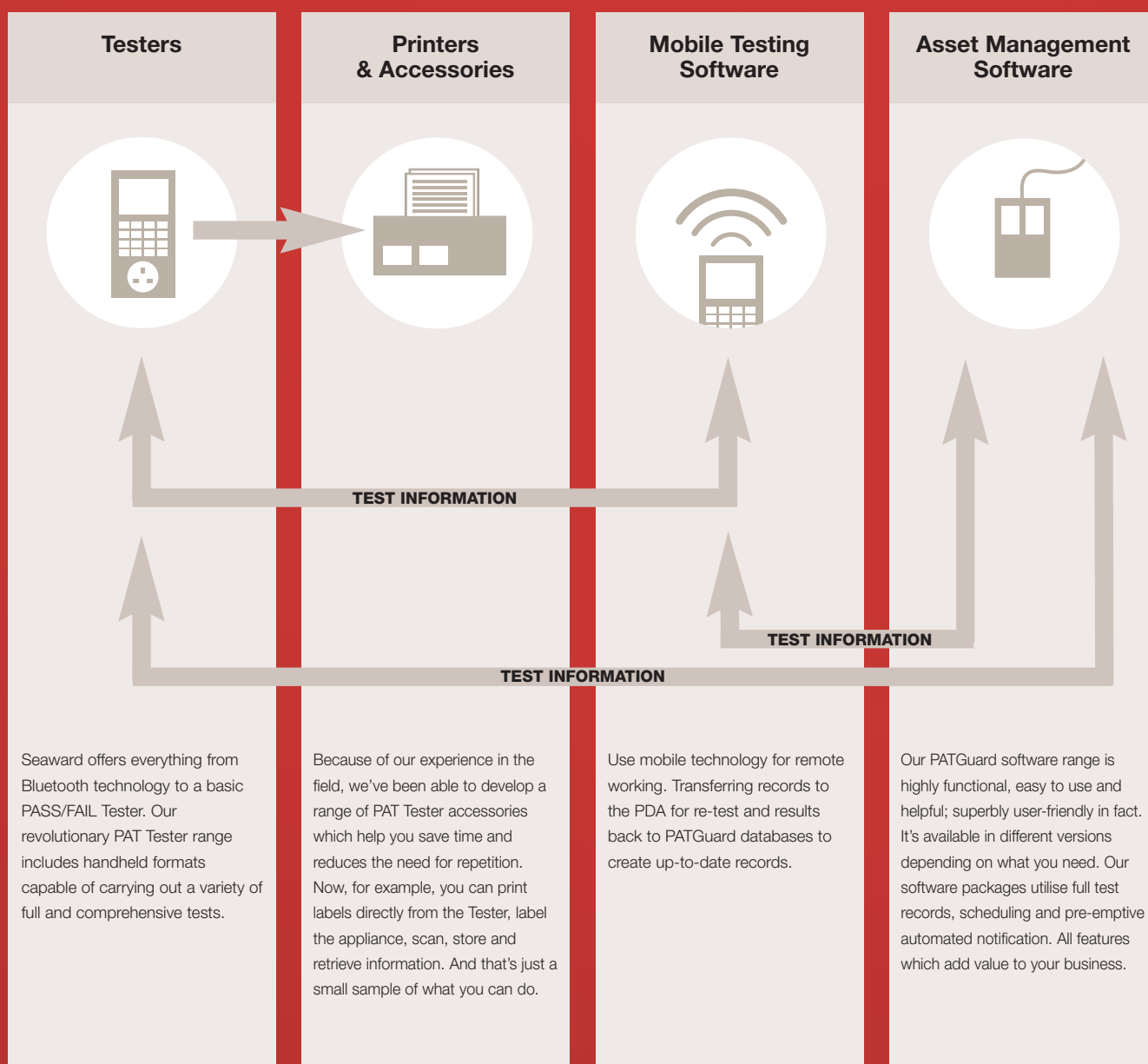


PAT SYSTEM

Smart technology and an intimate knowledge of the job result in Testers designed for easier work and better profits.

Today's world moves at an unprecedented pace: things change every day. Everything's smarter, smaller and faster. This is good news for us, and for you. It means we're developing and manufacturing better equipment and can incorporate technologies like Bluetooth data transfer and PDA test management databases. And we're not confined to supplying test equipment. We can now help your business or institution become more efficient and effective. We call it PATSolutions. This groundbreaking process involves everything from choosing your PAT Tester to following up with calibration services and training courses. It streamlines your processes, reduces costs, increases productivity and improves profits.





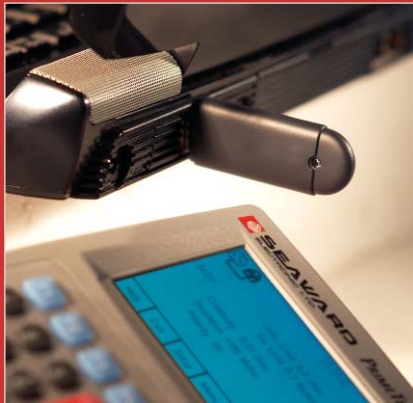
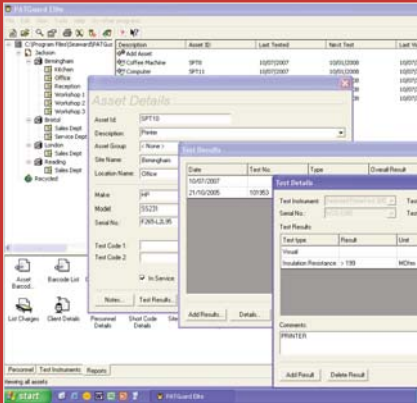
PAT SOFTWARE

PATGuard 2. New generation software that takes the stress out of the testing process.

At Seaward, we focus on more than Tester improvement.

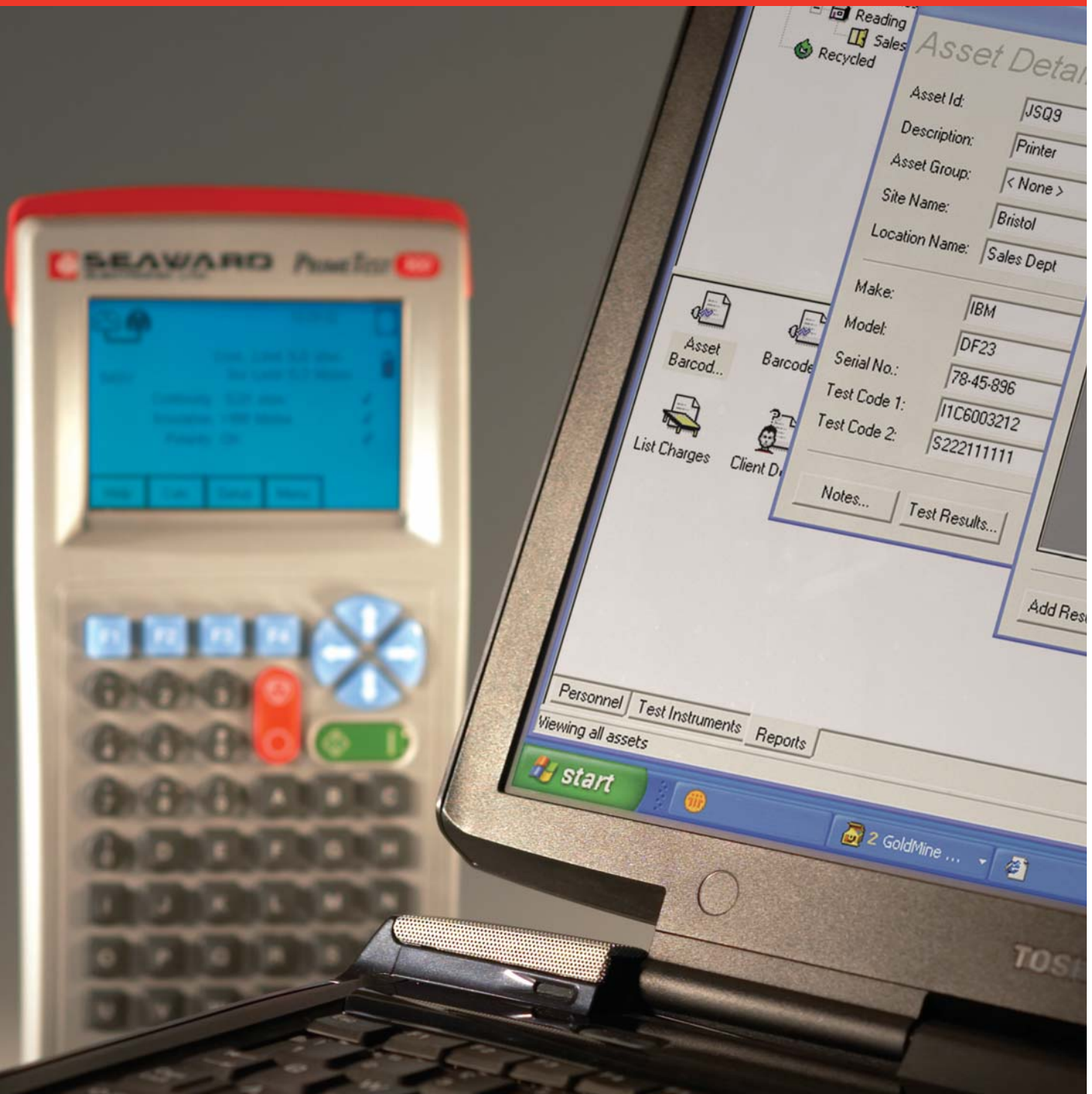
We offer a total solution, which makes PAT Testing a lot quicker and easier. From test and measurement equipment, right through to software and accessories. Our PATGuard 2 software is functional, easy to use and helpful. It comes in four versions, each providing an optimum solution to a particular requirement. PATGuard 2 and our Work About 2 software bring added value to your customer offer.

Proactive and user friendly, it presents you with a totally connected system which lets its various parts 'talk to each other'. It can email you to warn you when it's time to re-test, for instance. Features like this cut admin time and let you get on with what you're good at.



▲ Provides clear information on test user activity

▲ Bluetooth technology for wireless data transfer



TEST N TAG SYSTEM

Fast, automatic printing of appliance test labels direct from the test instrument.

Work is hard enough without the complications of using inferior products. Which is why at Seaward everything we do is designed to make your work easier and more efficient. Our new generation Test n Tag printers are perfectly equipped to help. Up to the minute Bluetooth technology means information can be transferred immediately from your Tester. Moments later, a tamper and waterproof label can be printed, with or without your logo. Of course we ensure your new printer is tough enough to last a very long time and clever enough to manage its own power usage. Printers like these will not only shorten the time you spend at each test site, they will make the process of test n tagging much easier.



1 On completion of the test routine, choose the type of label you would like. It is then printed automatically from the Tester.



2 Use the peelstick, if needed, to help remove the backing from the panel.



3 Attach panel label to side of tested appliance.



4 Or attach a cable wrap label.



PROFESSIONAL ADVICE

Our customers review
our three most advanced
PAT Testers.



“In the high pressure world of services maintenance, the right tools are essential. Romec think the Supernova out performs everything in its class.”

Romec technicians major in test and inspection services. We maintain essentials for blue chip clients like Royal Mail, Standard Life and Thomas Cook. There's no margin for error.

Seaward's Supernova Plus is the most comprehensive, useful Tester on the market. It's a sophisticated piece of kit and it deals with any test exceedingly well!

Best of all, we don't have to wait for information to download: it also takes care of all connections (printer, PC, Modem, everything). And the walk through instructions for each test on the big LCD make getting up and running so easy.



“The PrimeTest 200 is a remarkable Tester. It has made our daily work easier and our business more profitable. We love it.”

Market leaders and innovators can't work with anyone who gives less than the best. That's why Dyson uses The PrimeTest range.

The small, handheld PrimeTest 200 is three Testers in one. It enables you to PAT test, perform installation checks, make digital multimeter readings and take temperature measurements. The 200 incorporates all electrical safety tests for Class I and II equipment, and digital multimeter test functions. So it confirms a domestic appliance's safety and checks the condition of the circuit it's attached to. Because it multi-tasks, it means you don't have to carry a ton of equipment around with you.



“The PrimeTest 300 has revolutionised the way we go about the job of electrical safety testing. It’s accurate, tough, easy to use and outright brilliant.”

Britain suffers an average of 1000 electrical accidents annually.

Roughly thirty of those kill people. Consider these facts alongside statutory health and safety responsibilities, a growing blame culture and the increasing vigilance of commercial insurance companies and punitive corporate manslaughter penalties and you’ll understand why maintaining electrical safety is a priority for all of Kitchener’s 2000 employees. We carry out around 700,000 electrical tests for 500 customers a year. And we can’t afford to use anything but the best testing equipment. This is why we choose Seaward. We have just started to use the Bluetooth enabled PrimeTest 300.

PAT GUIDE

A handy reference
for your perfect
PAT Testing solution.

Testers & Functions		PT350	Supernova Elite	Europa Plus	PT250	PT100	PT50
▼Functions	Testers▶						
Mains Supply Check		■	■	■	■	■	■
PASS/FAIL Indicators		■	■	■	■	■	■
Earth Test Lead Null		■	4-Wire	4-Wire			
Earth Continuity (100mA)			■	■			
Earth Continuity (200mA)		■		■	■	■	■
Earth Continuity (4A)			■	■			
Earth Continuity (10A)			■	■			
Earth Continuity (25A)			■	■			
Insulation Resistance (250V)		■	■	■	■		
Insulation Resistance (500V)		■	■	■	■	■	■
PE Conductor Current (Earth Leakage)		■	■	■	■		
Touch Current		■	■	■	■		
Alternative Substitute Leakage			■	■	■	■	
Flash Test			■				
230V/110V INPUT/OUTPUT			■				
IEC Lead Test		■	■	■	■	■	■
Earth Loop Test (Digital Reading)		■					
RCD Test		■	■				
3 Phase Leakage					■		
Custom LCD					■	■	■
Graphical LCD		■	■	■			
Back Light		■	■	■			
Keyboard		■	■	■			
Barcode Scanner Input		■	■	■			
Test n Tag		■	■	■			
Bluetooth (Wireless)		■					
Handheld		■			■	■	■
Battery Powered		■			■	■	■
Rechargeable Batteries		■			Optional	Optional	Optional
Weight		1.0kg	9.5kg	3.5kg	1.0kg	1.0kg	1.0kg
Auto Testing		■	■	■	■	■	■
Programmable Pass/Fail Limits					■		
User Tests for Non Electrical Assets		■					
Pass/Fail Program Indicators		■	■	■			
PE Resistance Limit Calculator		■	■	■			
Memory Size		8000 records	5000 records	5000 records			
PC Download		■	■	■			
PC Upload		■	■	■			
Graphical Online Help		■	■	■			
Real Time Clock		■	■	■			

Accessories

▼ Accessories	Testers ►	Part Number	PT350	Supernova Elite	Europa Plus	PT250	PT100	PT50
	230/110V Adaptor	270A076	■	■	■	■	■	■
	110/230V Adaptor	281A075	■	■		■	■	■
	Appliance Number Labels	194A307	■	■	■		■	■
	Test Code Labels	194A308	■	■	■		■	■
	Custom Appliance Number Labels	194A323	■	■	■			
	CCD Scanner	194A922	■	■	■			
	3 Phase Adaptors (Delta 4 pin 16A)	209A910	■	■	■	■	■	■
	3 Phase Adaptors (Star 5 pin 16A)	209A911	■	■	■	■	■	■
	3 Phase Adaptors (Delta 4 pin 32A)	209A912	■	■	■	■	■	■
	3 Phase Adaptors (Star 5 pin 32A)	209A913	■	■	■	■	■	■
	3 Phase Adaptor (leakage and earth continuity)	391A910				■		
	NTB-1 RCD Isolator Adaptor	372A953	■	■	■	■		
	PAT CheckBox	227A910	■	■	■	■	■	■
	Europa Series Carry Case	270A951			■			
	Thermal Label Printer	283A954		■	■			
	Modem Kit	283A969		■	■			
	Supernova Plus Carry Case	298A950		■				
	Test n Tag Printer	308A924	■	■	■			
	Test n Tag Elite	339A970	■					
	Test n Tag Kit	308A915	■	■	■			
	Bluetooth Thermal Printer	339A930	■					
	Portable Appliance Register and Test Record	998A223	■	■	■	■	■	■
	NIMH Batteries & Battery Charger	339A950	■				■	■
	Bluetooth/RS232 Adaptor	339A960	■					
	Bluetooth/ Test n Tag Printer Adaptor	342A914	■					
	Log Cards	91B037	■	■	■		■	■
	Pass Labels	91B038	■	■	■		■	■
	Braincells Read/Write Reader	288A910		■	■			
	Braincells Self Adhesive Tag (50)	288A953		■	■			
	Braincells Cable-Tie Tag (50)	288A954		■	■			
	Bluetooth Scanner	339A923	■					
	PAT Training DVD	998A104	■	■	■	■	■	■

Software

▼ Software	Tester ►	PT350	Supernova Elite	Europa Plus	PT250**	PT100**	PT50**
	PATGuard Elite SQL 2	■	■	■	■	■	■
	PATGuard Elite 2	■	■	■	■	■	
	PATGuard Pro 2	■	■	■	■	■	■
	PATGuard Lite 2	■	■	■			
	PATGuard Work About 2	■	■	■	■	■	■
	PATGuard Time Manager 2	■	■	■			
	PATGuard Elements	■	■	■	■	■	■

* Manual input - download not supported

** Manual input only as Tester does not have memory

PRIMETEST 350

The most advanced Tester in the world. The ultimate choice for professionals.

Handheld	Load test
Battery powered	User definable tests
USB & Bluetooth download	In-situ rechargeable batteries
Ideal users: <ul style="list-style-type: none"> ■ PAT Testers ■ Electrical Contractors <ul style="list-style-type: none"> ■ Facilities Managers ■ Manufacturers 	



The PrimeTest 350 PAT tester enables fast and efficient portable appliance testing. This handheld battery powered tester stores results and connects wirelessly via Bluetooth to results printers and barcode scanners. Test results can be transferred to a PC and PAT testing software via USB connection.

In addition to being lightweight and handheld, the PrimeTest 350's data logging feature means results, asset IDs, location and other data can be stored and transferred to PAT testing software such as the Seaward PATGuard Elite package for record keeping and traceability. Its vast range of tests include alternative leakage, 250V insulation and load is measured during the protective conductor and touch current tests.

Advanced PAT Solutions Package:

PAT Solutions is a way of approaching all aspects of electrical testing. From Testers themselves to information management software, through to label printers and more.

You can buy each Tester and its accessories separately or as an optional PAT Solutions Package which includes everything you need to run an efficient, effective PAT testing business.

- PrimeTest 350 Tester
- Carrying case
- PATGuard Elite 2 Software
- Calibration certificate
- Battery charger
- Test leads and adaptors
- Test n Tag Elite printer
- Bluetooth laser scanner
- PATGuard support contract
- PAT testing guide
- PAT CheckBox

PAT TESTS

Earth Continuity

Test Current	+/- 200mA
Display Range	0.00ohm - 19.99ohm
Pass Value	User Defined

Insulation Resistance

Test Voltage	500V / 250V DC @ 1mA nominal
Display Range	0.01Mohm - 199Mohm
Pass Value	User Defined

IEC Lead Test

Tests Performed	Earth, Insulation Resistance, Live & Neutral Continuity
-----------------	---

Protective Conductor Current/Load

Test Voltage	195V - 230V, 45Hz - 60Hz
Display Ranges	0.15mA - 19.99mA 0.00kVA – 4.00kVA 0.00A – 16.00A
Pass Value	User Defined

Touch Current/Load

Test Voltage	195V - 230V, 45Hz-60Hz
Display Ranges	0.07mA - 3.5mA 0.00kVA – 4.00kVA 0.00A – 16.00A
Pass Value	User Defined

Alternative Leakage Current

Test Voltage	40V, 50Hz
Display Range	0.10mA - 19.99mA
Pass Value	User Defined

RCD Trip Time

Test Current	30mA rms, 0°/180° auto switched
Display Range	0ms - 200ms

Loop Impedance

Test Current	Non-tripping for >30mA RCD
Display Range	0.0ohm - 199ohm

Power Socket Test

Voltage Range	195V – 253V
Voltage Indicators	Phase to Earth Voltage Phase to Neutral Voltage

ADDITIONAL INFORMATION

Memory size	8000 records
Weight & Dimensions	0.9kg / 26cm x 10cm x 5.5cm
Power Source	6 x AA NiMH rechargeable batteries

ACCESSORIES

Hardware

Test n Tag printer (308A924)
 Test n Tag Elite printer (339A970)
 Bluetooth Laser Scanner (339A923)
 PAT CheckBox (227A910)
 Bluetooth Test n Tag Printer adaptor (342A914)

Software

PATGuard Elite SQL 2 (352A950)
 PATGuard Elite 2 (352A910)
 PATGuard Pro 2 (352A920)
 PATGuard Lite 2 (352A930)
 PATGuard Work About 2 (336A910)
 PATGuard Time Manager 2 (334A910)

Training

PrimeTest 350 Training Course
 PATGuard 2 Software Training Course

Services

Service & Calibration
 JumpStart

PrimeTest 350 part no: 356A910
PrimeTest 350 Advanced PAT Solutions part no: 345A913

SUPERNOVA ELITE

A comprehensive, dual voltage PAT with flash test.

- | | |
|--|----------------------------|
| Any test, any appliance | Comprehensive connectivity |
| Full dual voltage | Walk through instructions |
| Fast downloads | Remote modem download |
| Ideal users: <ul style="list-style-type: none"> ■ Construction Industry ■ Manufacturers <ul style="list-style-type: none"> ■ Hire Companies ■ Facilities Managers | |



The Supernova Elite is a ruggedly put together, comprehensive Tester that you'll find indispensable. It will carry out any test you require, including flash testing, RCD trip time and dual voltage capability. It's packed with incredibly useful features, like a 5000 test record memory, storing locations, user, test status and date. It links to a PC and has a Modem for remote transfer of information. It has connections for a barcode reader (generating barcodes via a thermal printer), a brain cell scanner, a printer and a parallel printer port. It has a large LCD display for easy use, legible walk-through instructions for each test and it downloads fast. Asset management is supported by three software options.

Advanced PATSolutions Package:

PATSolutions is a way of approaching all aspects of electrical testing. From Testers themselves to information management software, through to label printers and more.

You can buy each Tester and its accessories separately or as an optional PATSolutions Package which includes everything you need to run an efficient, effective PAT testing business.

- Supernova Elite Tester
- PATGuard Elite 2 Software
- Connectors
- Test n Tag printer
- Calibration Certificate
- PATGuard support contract
- PAT Testing Guide
- Barcode scanner

PAT TESTS

Earth Continuity

Test Currents	25A, 10A, 4A, AC
Display Range	0.00ohm - 19.99ohm
Pass Value	User Defined
Measurement Technique	4 Wire Measurement, Floating Earth

Earth Screen Continuity

Test Current	100mA
Display Range	0.00ohm - 19.99ohm
Pass Value	User Defined
Measurement Technique	4 Wire Measurement, Floating Earth

Insulation Resistance

Test Voltage	250V, 500V DC
Display Range	0.1Mohm - 100Mohm
Pass Value	User Defined

Flash

Test Voltage Class I	1500V rms
Test Voltage Class II	3000V rms
Display Range	0.05mA - 2.5mA
Pass Value	User Defined

RCD Trip Time Test

Test Current	30mA
Display Range	0ms - 500mA
Pass Value	200ms

Protective Conductor Current

Test Voltage	230V/110V
Display Range	0.1mA - 10mA
Pass Value	User Defined

Touch Current

Test Voltage	230V/110V User Selectable
Display Range	0.1mA - 2.0mA
Pass Value	User Defined

Alternative / Substitute Leakage

Test Voltage	40V AC Nominal
Display Range	0.1mA - 2.0mA
Pass Value	User Defined

Load Test

Display Range	0kVA - 4.2kVA
---------------	---------------

IEC Lead Polarity

Tests Performed	Live/Neutral Continuity and Polarity
-----------------	--------------------------------------

ADDITIONAL INFORMATION

Voltage Range	103V - 126V, 207V - 253V, 45Hz - 65Hz
Weight & Dimensions	9.5kg / 40cm x 32cm x 16cm
Keyboard	QWERTY
Display graphic	LCD - 1/4 VGA (320 x 240 pixels)
Connectivity	RS232 Port Connection Parallel Port Connection

ACCESSORIES

Hardware

Test n Tag printer (308A924)
Modem kit (283A969)
Braincell Wand (288A910)
Braincells (288A953)
Supernova / Europa PAT CheckBox (283A951)
Bluetooth Download Adaptor (339A962)

Software

PATGuard Elite SQL 2 (352A950)
PATGuard Elite 2 (352A910)
PATGuard Pro 2 (352A920)
PATGuard Lite 2 (352A930)
PATGuard Work About 2 (336A910)
PATGuard Time Manager 2 (334A910)

Training

Supernova Elite Training Course
PATGuard 2 Software Training Course

Services

Service & Calibration
JumpStart

Supernova Elite part no: 283A936
Supernova Elite Advanced PAT Solutions part no: 323A910

EUROPA PLUS

A Portable PAT Tester with large internal memory.

Shorter test times	Record asset details
In-situ tests	Comprehensive testing
Easy to use	Remote modem download
Ideal users: <ul style="list-style-type: none"> ■ PAT Testers ■ Electrical Contractors <ul style="list-style-type: none"> ■ Facilities Managers ■ Manufacturers 	



The Europa Plus is a portable, high volume Tester that's impressed everyone who's worked with it. It has a full compliment of tests and dual voltage abilities. You can test any appliance with it. It does in-situ Earth Bond and Touch Current Tests while the equipment being tested stays powered up, perfect when the equipment can't be powered down e.g. servers. It can also record asset details for maintenance, which allows you to print labels and download the results into a software management system. With in-situ testing, there's less time involved in disconnecting the appliance from accessories and powering down critical equipment. All of which makes your working day a lot shorter. Believe us, it's fast.

Advanced PATSolutions Package:

PATSolutions is a way of approaching all aspects of electrical testing. From Testers themselves to information management software, through to label printers and more.

You can buy each Tester and its accessories separately or as an optional PATSolutions Package which includes everything you need to run an efficient, effective PAT testing business.

- Europa Plus Tester
- Tester case
- PATGuard 2 Software
- Calibration certificate
- Test n Tag printer
- PATGuard support contract
- Connectors
- PAT Testing Guide
- Barcode scanner

PAT TESTS

Earth Continuity

Test Currents	25A AC, 10A AC, 4A AC±200mA DC
Display Range	0.00ohm - 19.99ohm
Pass Value	User Defined
Measurement Technique	4 Wire Measurement, Floating Earth

Earth Screen Continuity

Test Current	100mA
Display Range	0.00ohm - 19.99ohm
Pass Value	User Defined
Measurement Technique	4 Wire Measurement, Floating Earth

Insulation Resistance

Test Voltage	250V, 500V DC
Display Range	0.1Mohm - 100Mohm
Pass Value	User Defined

Protective Conductor Current

Test Voltage	230V
Display Range	0.1mA - 10mA
Pass Value	User Defined

Touch Current

Test Voltage	230V
Display Range	0.1mA - 2.0mA
Pass Value	User Defined

Substitute Leakage

Test Voltage	40V AC Nominal
Display Range	1.00mA - 19.99mA
Pass Value	User Defined

Load Test

Display Range	0kVA - 4.2kVA
---------------	---------------

IEC Lead Polarity

Tests Performed	Live/Neutral Continuity and Polarity
-----------------	--------------------------------------

ADDITIONAL INFORMATION

Voltage Range	207V - 253V, 45Hz - 65Hz
Weight & Dimensions	3.5kg / 31cm x 21cm x 8cm
Display Graphic	LCD - 1/4 VGA (320 x 240pixels)
Connectivity	2 Serial Port Connections
Keyboard	QWERTY

ACCESSORIES

Hardware

Test n Tag printer (308A924)
 Modem kit (283A969)
 Braincell Wand (288A910)
 Braincells (288A953)
 Supernova / Europa PAT CheckBox (283A951)
 Bluetooth Download Adaptor (339A962)

Software

PATGuard Elite SQL 2 (352A950)
 PATGuard Elite 2 (352A910)
 PATGuard Pro 2 (352A920)
 PATGuard Lite 2 (352A930)
 PATGuard Work About 2 (336A910)
 PATGuard Time Manager 2 (334A910)

Training

Europa Plus Training Course
 PATGuard 2 Software Training Course

Services

Service & Calibration
 JumpStart

Europa Plus part no: 302A910
 Europa Plus Advanced PATSolutions part no: 324A910

PRIMETEST 250

A comprehensive handheld PAT tester.
The Engineer's ideal companion.

Easy to use manual tester

Equivalent leakage

Comprehensive tests range

Protective Conductor / Touch Current

Clear PASS/FAIL indication

Automatic test sequences

Ideal users: ■ In-house safety testing engineers
■ Electrical Contractors ■ Service & Maintenance Engineers



Backlit for illustration purposes

The PrimeTest 250 will perform all of the tests required by the IEE Code of Practice, including RCD trip-time, protective conductor current and touch current. It also includes a 250V DC insulation test for sensitive electrical appliances and surge protected leads, and it is also capable of testing 3-phase machinery.

This highly versatile instrument tests most workplace appliances using long-life battery power; when protective conductor current or touch current measurements are required, simply connecting a mains supply will automatically select the correct test sequence.

*For 3 phase and RCD testing, accessories are required.

PrimeTest 250 PATBag

Seaward manual PATBags contain everything needed to perform safety tests with total accuracy and speed. Each is brimming with high quality accessories, software, training, guides and invaluable resource material.

PATBag Kit Contents:

- Primetest 250 Tester
- PATGuard Elements Manual
- Durable purpose-made carry bag
- 110V adaptor
- PAT Training DVD
- Guide to PAT Testing
- PAT Reference Card
- Business Builder CD-Rom
- Portable appliance register and test record
- 500 pass labels and 500 fail labels

PAT TESTS

Earth Continuity

Output Current:	200mA minimum into 2Ω
Test Voltage (o/c):	9V DC nominal
Test Duration (Class I Test):	2s nominal
Display Range:	0.01 ohm to 19.99 ohm
Pass Value (Class I Test):	0.2Ω

Insulation Resistance

Test Voltage:	250/500VDC @1mA nominal, < 2mA (s/c)
Test Duration (Class I or II):	2s
Display Range:	0.01 Mohm to 19.99 Mohm
Pass Value:	1.0 MΩ Class I, 2.0 MΩ Class II

Equivalent Leakage

Test Voltage:	40V Nominal AC 50Hz Open Circuit
Test Duration:	2s – 30s nominal
Display Range:	0.1 mA to 19.99mA
Pass Value:	0.75mA CLI / 0.25mA CL II

IEC lead test

Test voltage:	5V DC nominal
Test Duration:	Time for test (2s max)
Test:	Live / Neutral Checks for o/c, s/c and crossed

Protective Conductor Current

Test Voltage:	Supply Voltage, max current 13A
Test Duration:	30s maximum
Display Range:	0.15 mA to 9.99 mA
Pass Value:	0.75mA/3.5mA (user selectable with 0.75mA as default)

Touch current

Test Voltage:	Supply Voltage, max current 13A
Test Duration:	30s maximum
Display Range:	0.10 mA to 5.00 mA
Pass Value:	0.25mA

3 phase leakage current *Requires 3 phase adaptor accessory

Test Voltage:	3 phase supply voltage
Test Duration:	Continuous measurement
Display Range:	0.10 mA to 9.99 mA
Pass Value:	3.5mA

RCD trip time

Test Voltage:	Mains supply voltage
Test Current:	30mA rms sinusoidal
Test Current Phase:	0°/180° auto switched on alternate tests
Measuring Range:	0ms – 500ms
Pass Value:	200ms

Power socket check

Input voltage range:	225 – 254V AC max current 13A UK
Indicates configuration of voltage potential:-	Line potential phase to earth Line potential phase to neutral Line potential neutral to earth

ADDITIONAL INFORMATION

Weight & Dimensions	1.0kg / 26cm x 10cm x 5.5cm
Power Source	6 x AA Batteries

ACCESSORIES

Hardware

NTB-1 RCD Isolator (372A953)
 3 Phase Adaptor (leakage and earth continuity) (391A910)
 PowerCheck 1557 (369A910)
 PAT Checkbox (227A910)

Software (Manual input only as tester has no memory)

PATGuard Elements (387A910)

Training

PAT Training DVD (998A104)

Services

Service & Calibration

PrimeTest 250 part no: 382A910
PrimeTest 250 PATBag part no: 345A928

PRIMETEST 100

A powerful, push-button appliance and socket Tester.

Versatile tester	Easy to use
Handheld	Battery powered
Clear display	PASS/FAIL indication
Ideal users: ■ Maintenance Staff ■ Care Homes	■ Schools & Colleges ■ Leisure Industry



Backlit for illustration purposes

The PrimeTest 100 is top of its class, no ifs, no buts. A highly useful, functional and diverse tool, the 100 has three operational modes and is an easy to use, comprehensive unit. Push a button and you get the option of either, Class I PAT test, Class II PAT test or IEC Lead test. Connect the 100 to a power outlet and it will automatically check the socket wiring and mains voltage. Its large display shows test result values as well as a PASS or FAIL indication. Battery powered like all PrimeTests, it'll help you work quicker and more efficiently. PATGuard Work About 2 software enables you to record information on site for storage in a PAT test record database. A really versatile Tester: ask anyone who uses it.

PrimeTest 100 PATBag

Seaward manual PATBags contain everything needed to perform safety tests with total accuracy and speed. Each is brimming with high quality accessories, software, training, guides and invaluable resource material.

PATBag Kit Contents:

- Primetest 100 Tester
- PATGuard Elements Manual data entry software
- Durable purpose-made carry bag
- 110V adaptor
- PAT Training DVD
- Guide to PAT Testing
- PAT Reference Card
- Business Builder CD-Rom
- Portable appliance register and test record
- 500 pass labels and 500 fail labels

PAT TESTS

Earth Continuity

Test Current	+/- 200mA DC
Display Range	0.00ohm - 19.99ohm
Pass Value	0.2ohm

Insulation Resistance

Test Voltages	500V DC
Display Range	0.20Mohm - 19.99Mohm
Pass Value	1Mohm Class I, 2Mohm Class II

IEC Lead Test

Tests Performed	Earth Continuity Insulation Resistance Live, Neutral Continuity and Polarity
-----------------	--

Equivalent Leakage Class I

Test Voltage	40V AC Nominal
Display Range	0.10mA - 19.99mA
Pass Value	0.75mA

Equivalent Leakage Class II

Test Voltage	40V AC Nominal
Display Range	0.10mA - 19.99mA
Pass Value	0.25mA

CIRCUIT TESTS

Power Socket Test

Input Voltage Range	230V +10%, - 15% AC
Indicators	Phase to Earth Voltage, Phase to Neutral Voltage, Neutral to Earth

ADDITIONAL INFORMATION

Weight & Dimensions	0.8kg / 26cm x 10cm x 5.5cm
Power Source	6 x AA Batteries

ACCESSORIES

Hardware

Battery Charger + Rechargeable NiMH Batteries (339A950)
PAT CheckBox (227A910)

Software (Manual input only as tester has no memory)

PATGuard Elements (387A910)

Training

PAT Training DVD (998A104)

Services

Service & Calibration
JumpStart

PrimeTest 100 part no: 344A910

PrimeTest 100 PATBag part no: 345A926

PRIMETEST 50

A basic, handheld safety checker that's easy to use.

Cord test	Easy to use
Handheld	Battery powered
Tests Class I & Class II	LCD display
Ideal users: ■ Maintenance Staff ■ Care Homes	■ Schools & Colleges ■ Leisure Industry

Like all its fellow PrimeTests, the 50 is light and portable but has a greatly simplified range of tests. All you need to do is choose the test you need, either Earthed appliance, double insulated appliance or mains cord testing. Its easy to read display is simple and registers PASS or FAIL. Connect the 50 to a power outlet and it will automatically check the socket wiring and mains voltage. It doesn't get much simpler. PATGuard Work About 2 software is optional if you need to record the latest test result information, so it's easy to manage test information too. The 50 is rugged and easily able to withstand anything the working day brings with it. An obvious choice if you're looking for a reliable, portable safety Tester that's easy to use.



PrimeTest 50 PATBag

Seaward manual PATBags contain everything needed to perform safety tests with total accuracy and speed. Each is brimming with high quality accessories, software, training, guides and invaluable resource material.

PATBag Kit Contents:

- Primetest 50 Tester
- PATGuard Elements Manual data entry software
- Durable purpose-made carry bag
- 110V adaptor
- PAT Training DVD
- Guide to PAT Testing
- PAT Reference Card
- Business Builder CD-Rom
- Portable appliance register and test record
- 500 pass labels and 500 fail labels

Backlit for illustration purposes

PAT TESTS

Earth Continuity

Test Current	+/- 200mA DC
PASS/FAIL Threshold	0.2ohm

Insulation Resistance

Test Voltages	500V DC
PASS/FAIL Threshold	1Mohm Class I, 2Mohm Class II

IEC Lead Test

Tests Performed	Earth Continuity Insulation Resistance Live, Neutral Continuity and Polarity
-----------------	--

CIRCUIT TESTS

Power Socket Test

Input Voltage range	230V +10%, -15% AC
Indicators	Phase to Earth Voltage Phase to Neutral Voltage Neutral to Earth

ADDITIONAL INFORMATION

Weight & Dimensions	0.8kg / 26cm x 10cm x 5.5cm
Power Source	6 x AA Batteries

ACCESSORIES

Hardware

Battery Charger + Rechargeable NiMH Batteries (339A950)
PAT CheckBox (227A910)

Software (Manual input only as tester has no memory)

PATGuard Elements (387A910)

Training

PAT Training DVD (998A104)

Services

Service & Calibration
JumpStart

PrimeTest 50 part no: 347A910
PrimeTest 50 PATBag part no: 345A930

PATGUARD 2 SOFTWARE

World-leading software
that makes life easier

Auto re-test schedules

Email safety alerts

Easy to use graphic display

Total record management

Generates pdf files

Compatible with leading PAT Testers

Ideal users: ■ Health & Safety Managers ■ PAT Service Providers
■ Maintenance Managers ■ Facility Managers

PATGuard Elite 2.

World-leading PAT software that makes life easier.

If you PAT test on a regular basis this is an ideal bit of software. It gives you complete quick and easy management of the PAT testing process.

One program supplies the total solution. From the first test, to downloading results, certificates, planning re-tests and uploading. Its extensive features are simple to use and include clear re-test identification, optional email alerts for re-testing and a huge range of reports to help you increase the speed of your business. PATGuard Elite 2 connects direct to your Tester and uploads and downloads fast. How easy is it to learn? PATGuard Elite 2 uses Windows-based information management, so it's pretty simple.

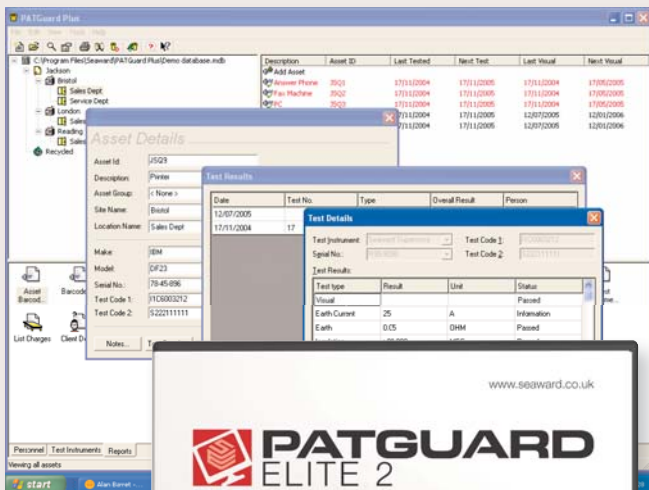
Part no: 352A910

PATGuard Elite SQL 2.

SQL database, multi-user version of PATGuard Elite 2.

This version of PATGuard Elite 2 is designed to give multi-users simultaneous access to SQL databases. It's compatible with all Microsoft SQL Server 2005 programs and Oracle 10g, includes Download Preview, to correct download data prior to processing, and includes Safety First Express import.

Part no: 352A950



TRY BEFORE YOU BUY
Download trial version at
www.seaward.co.uk

PATGuard Pro 2.

Your powerful, user-friendly, comprehensive program.

If you require asset management information, this is the comprehensive software package for you. It enables you to capture a lot more information from the PAT Tester and it stores more information on the appliance's history. PATGuard Pro 2 gives you access to a vast range of reports, as well as more information on your test record and clear identification of items which need to be re-tested. And it gives you it fast, very fast indeed. PATGuard Pro 2 uses Windows-based information management so it's really easy to learn how to use.

Part no: 352A920

PATGuard Elements

An easy-to-use manual entry PAT testing software packed with useful features.

PATGuard Elements is a manual entry PAT software program, designed to enable a formal log of portable appliance test results to be stored and called upon as required. This easy-to-use program boasts many useful features, including a wide range of test reports. It also has a test history feature which enables any new test results to be added to the history of an existing appliance. An easy set up wizard and upgrade path to the PATGuard Elite PAT software program make PATGuard Elements a prudent choice for those starting out in PAT testing or with an in-house PAT testing responsibility.

Part no: 387A910

PATGuard Lite 2.

Entry level software that helps businesses succeed.

PATGuard Lite 2 is an excellent entry level software package which facilitates fast, effective downloading of test information and certificate printing. If you need software to help you with quick, basic testing, PATGuard Lite 2 is the perfect solution for your business or personal use. PATGuard Lite 2 is a low cost piece of software which produces records and certificate documentation to support PAT testing and allows you to download test results in a swift, effective fashion. It's extremely easy to use, even if you've only received the most basic training. And it's easy to learn because it uses Windows-based information management.

Part no: 352A930

PATGUARD 2 SOFTWARE

World-leading software
that makes life easier

Easy to use

Record all tests

Remote download/upload

Remote data transfer

Manage test usage

Wireless

Ideal users: ■ PAT Testers ■ Facilities Managers
■ Electrical Contractors ■ Manufacturers

PATGuard Work About 2.

Improve your data management with your own Personal Digital Assistant.

This specially designed software package lets you record results quickly and easily. Using a PDA lets you test simply and easily from any Tester (it doesn't have to be Seaward). All you have to do is put the information into the PDA and store it for later use. During the actual testing, the remote off-site working gives you the freedom and flexibility to work in a much smarter way. PATGuard Work About 2's easy to learn, because it uses familiar Pocket PC interfaces combined with PATGuard's Windows-based test record management. PDA and mobile technology mean that you can email pre-test PAT Test records and results when used with PATGuard databases.

Part no: 336A910

PATGuard Time Manager 2.

Essential kit for test time management.

Ideal for companies which manage off-site or remote testing staff, because it provides clear time management facilities. It gives you total confidentiality because it runs independently of PATGuard data management software. Its simple-to-read graphical data display provides you with clear information on users' activity, in other words, the number of tests taken and the time of those tests. So it helps you understand how the Testers are used, meaning that you can identify where improvements can be made to training. Time Manager 2 is a great way to help achieve faster, more efficient testing.

Part no: 334A910



TRY BEFORE YOU BUY

Download trial version at
www.seaward.co.uk

PATGuard Software Specification Chart

FEATURE	PATGuard Elements	PATGuard Lite 2	PATGuard Pro 2	PATGuard Elite 2	PATGuard Elite SQL
Rapid manual data entry	■				
Manual data entry			■	■	■
Microsoft SQL server 2005/2008 compatible					■
Oracle 10g Compatible					■
Multi-user simultaneous access to database					■
Safety First Express import			■	■	■
Preview & correct download before processing			■	■	■
Automatic email safety alerts				■	■
Automatic re-test scheduling				■	■
Create a view only PATGuard for clients				■	■
Upload sites, locations, asset IDs & test sequences				■	■
Download compatible with large range of testers		■	■	■	■
Repair logging	■		■	■	■
Range of comprehensive test reports	■			■	■
Range of test reports			■		
Full test history per asset record	■		■	■	■
Clear re-test identification	■		■	■	■
Tester update program		■	■	■	■
Test n Tag logo transfer		■	■	■	■
Windows-based test record database	■	■	■	■	■
Invoice generator	■				
Test certificate report	■	■	■	■	■
Set-up wizard	■	■	■	■	■
Create test programs for different test situations				■	■
Compatible with PATGuard Work About 2		■	■	■	■

ACCESSORIES

Working 'in the field' with clients gives us valuable insights into what they need. Which means great Testers. And great accessories.



Test n Tag Kit

This has got the lot: label printer, tough laminate labels, CCD barcode scanner and carry case. The printer lets you print on the spot direct from your Tester. Add the barcode and you get asset identification, fast.

Part no: 308A915



Temperature Module

Plug this directly into the Prime-Test 200 and you'll be able to measure temperature in a range of -50°C to 400°C in both Fahrenheit and Centigrade.
Part no: 304A952



Test n Tag Printer Adaptor

Developed to allow the TnT kit to work with the Primetest 300. Easy to connect. Just plug the adaptor into the printer and the printer's power supply means the printer is Bluetooth ready.
Part no: 342A914



CCD Scanner

This lets you input and access asset information quickly. This ultra reliable scanner connects direct with the Tester and is very handy when the Tester's uploaded with asset details prior to testing.
Part no: 194A922



Bluetooth Scanner

A portable ID laser scanner with bluetooth interface. Extremely compact and lightweight, making it ideal for mobile applications. Powered by standard LR-3 (AAA) batteries.
Part no: 339A923



Braincells and Wand

Braincells use RFID technology and are the new way to store product info. Use the wand to read Braincell fast and efficiently.
Braincell Part no: 288A953
Wand Part no: 288A910



CCD Scanner Adaptor

Plug this nifty unit into the end of your scanner and you're Bluetooth ready, instantly. It lets your CCD Scanner connect wirelessly with the PrimeTest 300 and 350. Rechargeable batteries.
Part no: 339A960



PAT CheckBox

Designed to provide a safe, simple and quick way to check a PAT Tester's calibration. Checkbox can even check Portable Appliance Testers outside the Seaward range.
Part no: 227A910



Test n Tag Wireless Printer Adaptor

The new Bluetooth battery pack adaptor not only adds Bluetooth connectivity to the Test n Tag printer but also provides power from an internal rechargeable NiMH battery pack. Plug the adaptor into a Test n Tag printer for a totally wireless solution.
Part no: 339A965

TEST N TAG PRINTERS

Professional solutions for instant printing of test labels

- | | |
|---|---------------------------|
| Clear label print | Portable or benchtop |
| Fast labelling | Direct results download |
| Easy asset ID | The professional's choice |
| Ideal users: ■ Health & Safety Managers ■ PAT Service Providers
■ Maintenance Managers ■ Facility Managers | |

Test n Tag gives PAT testing personnel a professional test labelling system for immediate attachment to the equipment or its cable at the touch of a button, automating the process and speeding test times. The labels contain all key labelling information as recommended by the IET. The Seaward system allows the user to incorporate their own logo and company details. Direct printing of safety testing results and other key details ensures complete accuracy and security of information and eliminates the need for larger hand written or pre-printed labels. Labels also have the facility to incorporate a barcode for appliance identification and future testing, which can be read by a barcode reader.





Test n Tag Elite

A handy, hard-wearing printer, with Impact-modified polycarbonate with fused oil and abrasion resistant rubber overmould (six-foot drop protection). Featuring smart battery management to monitor the battery for longer life and performance. Labels are tamperproof, waterproof and professionally printed with your logo and barcode. Compatible with PrimeTest 350 and PrimeTest 300.
Part No: 339A970



Test n Tag Printer

Ideal multi purpose label printer. Labels are tamperproof – ensuring the security and accuracy of your test. Promote your company by inserting the company logo, name and contact details. Label includes barcode, asset number, test date, next test date, user name and test status. There's even a choice of panel label or cable wrap label. Immediate printing with easy to install ink cartridge. Compatible with Supernova Plus, Europa Plus and (with Bluetooth adaptor) the PrimeTest 300 and 350.
Part No: 308A924



Desk Test n Tag Printer

No more tearing, fading or tampering with tags! The Desk Test n Tag produces professional tags 10cm x 5cm. The Desk Test n Tag is even supplied with a roll of tags (approx. 2000 labels per roll), printer ribbon and PC software disk. Seaward compatible - use the printer with the Supernova Plus and Europa Plus.
Part No: 312A912



Bluetooth Thermal Printer

Suitable for use with the PrimeTest 300 and PrimeTest 350. Print on the spot with Bluetooth technology, transferring test results direct from Tester to printer. With no wires and fast, clear printing this is ideal for any test situation.
Part No: 339A930

Test n Tag Label Cartridges		Part Number	Number of Labels
Black on White		342A912	100 aprox
Black on Yellow		308A914	100 aprox
Desk Test n Tag Labels		Part Number	Number of Labels
Orange		312A912	1000
White		312A951	1000
Yellow		312A956	1000
Green		312A962	1000
Red		312A961	1000
Blue		312A957	1000
Test n Tag Labels		Part Number	Number of Labels
Custom Appliance Number (where you require the numbers to be specific range)		194A323	250
Appliance Number (barcode labels come in any range)		194A307	250 (Min. Order 2000)
Pass Labels		91B038	500
Test Code Labels		194A308	240
Bluetooth Thermal Labels		339A310	250
Test n Tag Elite Labels		339A041	170

INSTALLATION

Total Test Solutions.

Contents

- 36 - 37 Installation System
- 38 - 39 Probing Questions
- 40 - 41 Installation Guide
- 42 - 43 PowerPlus 1557
- 44 - 45 PowerTest 1557
- 46 - 47 IRT 1557
- 48 - 49 ERT 1557
- 50 PowerCheck 1557
- 51 Checkbox 17 Plus
- 52 - 53 Proving Units
- 54 - 55 PowerPlus PC Software





INSTALLATION SYSTEM

Technological advances are transforming the installation testing industry.

Our Testers are at the forefront.

Today's world moves at an unprecedented pace: things change every day. Everything's smarter, smaller and faster. This is good news for us, and for you. It means we're developing and manufacturing better equipment and can incorporate technologies like PDA test management. And we're not confined to supplying test equipment. We can now help your business or institution become more efficient and effective. We call it PowerSolutions. This groundbreaking process involves everything from choosing your installation Tester to following up with calibration services and software. It streamlines your processes, reduces costs, increases productivity and improves profits.



The Seaward Installation System. Less paper and less hassle.

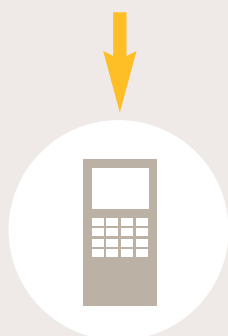


Test & Inspection Software

Create partially completed certificates using Test and Inspection Software PowerPlus PC.

Transfer a copy of the data into the built-in certificates within the tester via Bluetooth connectivity. Or enter manually into PowerPlus 1557 using the alphanumeric pad.

Transfer the data back onto the PC and edit your recorded information back at the office using the PowerPlus PC software. Or edit it manually into the tester using the alphanumeric keypad.



Tester

Carry out your testing - the PowerPlus 1557 automatically saves measurements to the built-in certificates. Also saves work-in-progress for you to resume at any time.



Print Certificates

Once complete, print your inspection results directly onto NAPIT, NICEIC, ECA or BS7671 stationery and supply client completed 17th Edition certificate.

PROBING QUESTIONS

The most technologically advanced 17th Edition installation Tester. Ever.



Thanks to some great design thinking you can hold and read the 1557 range of Testers at the same time. No other installation Tester in the marketplace has this feature. This amazing development comes as a result of our team working in the field, testing installations with our clients. This range of Testers weigh less than 1 kilogram each and fit easily into the palm of your hand.

The leader of the range, the PowerPLUS 1557 has 17th edition certificates built in to save you time and money.

For insulation testing, the IRT 1557 is the ideal Tester. The Tester's combination of integral probe and large backlit display mean you'll never work in the dark again.

The ERT 1557 is ideal for any Earth Resistance Tester's tool kit. It has a large on board memory and current clamp measurement facility.

The 1557 range offers comprehensive 16th and 17th Edition and Part P testing. The range can complete a multitude of tests, including Earth Continuity, Insulation (100V,250V,500V), Non Trip Loop Impedance, Line Impedance, PSC, PFS, RCD Trip Current, RCD Trip Time and Voltage / Frequency Measurement.



INSTALLATION GUIDE

How to find the right solution for your installation test requirements.

Testers & Functions		PowerPlus 1557	PowerTest 1557	IRT 1557	ERT 1557
▼ Functions	Tester ▶				
	Voltage	■	■	■	
	Frequency	■	■		
	Resistance	■	■	■	
	Wiring Polarity	■	■		
	Insulation 100V	■	■		
	Insulation 250V	■	■	■	
	Insulation 500V	■	■	■	
	Insulation 1000V	■		■	
	Continuity (200mA)	■	■	■	
	Continuity Buzzer	■	■	■	
	Loop/Line Resistance	■	■		
	PFC/PSC	■	■		
	RCD Trip Time	■	■		
	RCD Trip Current	■	■		
	Auto RCD Seq	■	■		
	Earth Resistance				■
	Phase Rotation	■			
	Back Light	■		■	
	Digital Readout	■	■	■	■
	Integrated Probe	■	■	■	
	Data Hold	■	■	■	

Accessories		PowerPlus 1557	PowerTest 1557	IRT 1557	ERT 1557
▼ Accessories	Tester ▶				
	PowerCheck 1557	■	■	■	
	CheckBox 17 Plus	■	■	■	
	Proving units	■	■	■	
	Fused test leads	■	■	■	
	ERT Current clamp				■
	Test n Tag Bluetooth printer adaptor and battery	■			



POWERPLUS 1557

Fixed Installation Tester with built in Certificates

17th Edition compliant

Built in certificates

Fast & efficient

High performance

Comprehensive features

Future proof

Ideal users: ■ Electricians

■ Electrical Contractors

Traditional methods of inspection and testing require a multi-function installation tester and some additional means of recording inspection and test results. This can be a pad and paper or a PDA device running some appropriate software. Why purchase a tester and a PDA? Why carry around a tester and a PDA? A replica of the inspection and test certificate is held directly on the PowerPlus 1557 allowing the user to record test and inspection data in the field. At the end of the day, tester can be synchronised with the accompanying PC software.

Professional PowerSolutions Package:

PowerSolutions is a way of approaching all aspects of electrical testing. From Testers themselves to information management software, through to label printers and more. You can buy each Tester and its accessories separately or as an optional PowerSolutions package which includes everything you need to run an efficient installation testing business. Package includes:

- PowerPlus 1557 unit + Quickstart Guide
- PowerPlus PC software installer CD
- USB Bluetooth adaptor
- Cordless Probe
- Test leads and crocodile clips
- Rechargeable batteries and charger
- Mains lead, carrying case and strap

17TH EDITION COMPATIBLE



THIS PRODUCT IS CARBON NEUTRAL

SPECIFICATION

Earth Continuity

Test Current	>200mA
Display Range	0.00ohms - 200ohms
Resolution	0.01ohms maximum
Test Lead Compensation	Null lead resistance 0.00ohms - 10.00ohms
Live Circuit Detection Test	inhibit if >30V detected

Insulation Resistance

Test Voltage	100V, 250V, 500V, 1000V
Display Range	0.00Mohms – 200Mohms
Resolution	0.01Mohms maximum
Live Circuit Detection Test	inhibit if >30V detected

Loop/Line Impedance (Non-tripping & High Current)

Supply Voltage	195 – 253V/440V, 45Hz – 65Hz
Test Current	15mA (non tripping for RCD protected circuits)
Test Current	3A (for non RCD protected circuits)
Display Range	0.01ohms - 2000ohms
Resolution	0.01ohms maximum
Loop Impedance	Phase to Earth
Line Impedance	Phase to Neutral/Phase to Phase
PFC/PSC Range	0 – 26kA

RCD Trip Time

Supply Voltage	195 – 253V, 45 – 65Hz
Test Currents	10, 30, 100, 300, 500mA
Trip Time Ranges	0ms – 2000ms at 1/2 I Δ n 0ms – 300ms at I Δ n general 0ms – 500ms at I Δ n selective 0ms – 40ms at 5x I Δ n
Auto Test	Auto sequence for 1/2 I Δ n, I Δ n and 5x I Δ n at 0° and 180°
RCD Type	General (G), Selective (S), Pulsed (A), AC (AC)

RCD Trip Current (Ramp Test)

Supply Voltage	195 – 253V, 45 – 65Hz
Test Currents	10, 30, 100, 300, 500mA
Ramp Current Range	1/2 I Δ n to 1.1 I Δ n

Voltage/Frequency Measurement

Display Range	0 – 440V
Resolution	1V
Frequency	Measuring Range 45 – 65Hz

Phase Rotation

Displays	RGB for correct phase sequence
----------	--------------------------------

ADDITIONAL INFORMATION

Compliance	IEC 61010-1 300V CAT III, EN 61557
Dimensions	260 x 100 x 55
Weight	950g
Power Supply	6 x AA NiMH Rechargeable

Software

PowerPlus PC (375A910)

PowerPlus 1557 part no: 363A912

PowerPlus 1557 + PowerPlus PC part no: 363A910

PowerPlus1557 Professional PowerSolutions part no: 363A913

POWERTEST 1557

The only installation Tester to feature an integral probe. The professional's choice.

17th Edition compliant	Reading at eye level
Loop Test in 5 seconds	4 measurements from 1 test
Auto RCD test	Long battery life
Ideal users: <ul style="list-style-type: none"> ■ Electrical Contractors ■ Electrical Engineers <ul style="list-style-type: none"> ■ Training Institutions ■ Power System Engineers 	

17TH EDITION COMPATIBLE



Thanks to an integrated probe and some great design thinking, you can hold and read the PowerTest 1557 at the same time, keeping your hands in your line of sight and out of danger. The PowerTest 1557 is also fast, very fast. This Tester will perform an earth loop, line loop, PFC and PSC test with the push of one button in under 5 seconds! No other installation Tester lets you do this. Weighing only 0.95kg, it fits into the palm of your hand and carries out the following tests with a simple turn of the knob. Earth Continuity, Insulation (100v, 250v, 500v), Non Trip Loop Impedence, Line Impedence, PSC, PFC, RCD Trip line, RCD Trip current and voltage/frequency measurement.

The PowerTest 1557 is supplied in a durable carrying case with a 2 year warranty, 6 x AA alkaline batteries, test lead set, shrouded safety plugs, shrouded safety test probes and a red cordless shrouded safety test probe.

Professional PowerSolutions Package:

PowerSolutions is a way of approaching all aspects of electrical testing. From Testers themselves to information management software, through to label printers and more. You can buy each Tester and its accessories separately or as an optional PowerSolutions package which includes everything you need to run an efficient installation testing business. Package includes:

- PowerTest 1557
 - PowerGuard Pro 2 software
- or
- PowerGuard Pro Mobile 2 software

TESTS

Earth Continuity

Test Current	>200mA
Display Range	0.00ohm - 199ohm
Resolution	0.01ohm maximum
Test Lead Compensation	Null lead resistance 0.00ohm - 10.00ohm
Live Circuit Detection	Test inhibit if >30V detected

Insulation Resistance

Test Voltage	100V, 250V, 500V
Display Range	0.05Mohm – 199Mohm
Resolution	0.01Mohm maximum
Live Circuit Detection	Test inhibit if >30V detected

Loop/Line Impedance

Supply Voltage	195 - 253V/340-440V,45Hz-65Hz
Test Current	15mA (non tripping for RCD protected circuits)
Display Range	0.01ohm - 2000ohm
Resolution	0.01ohm maximum
Loop Impedance	Phase to Earth
Line Impedance	Phase to Neutral/Phase to Phase
PFC/PSC Range	0 – 26kA

RCD Trip Time

Supply Voltage	195 – 253V, 45 – 65Hz
Test Currents	10, 30, 100, 300, 500mA
Trip Time Ranges	0ms – 2000ms at 1/2 I Δ n 0ms – 300ms at I Δ n general 0ms – 500ms at I Δ n selective 0ms – 40ms at 5x I Δ n
Auto Test	Auto sequence for 1/2 I Δ n, I Δ n and 5x I Δ n at 0° and 180°
RCD Type	General (G), Selective (S), Pulsed (A), AC (AC)

RCD Trip Current (Ramp Test)

Supply Voltage	195 – 253V, 45 – 65Hz
Test Currents	10, 30, 100, 300, 500mA
Ramp Current Range	1/2 I Δ n to 1.1 I Δ n

Voltage/Frequency Measurement

Display Range	0 – 440V
Resolution	1V
Frequency Measuring Range	45 – 65Hz

ADDITIONAL INFORMATION

Compliance	IEC 61010-1 300V CAT III, EN 61557
Weight & Dimensions	0.95kg / 26cm x 10cm x 5.5cm
Power Supply	6 x AA Alkaline Batteries (supplied) 6 x AA NiMH Rechargeable Batteries (optional)

ACCESSORIES

Hardware

PowerCheck 1557 (369A910)

Software

PowerGuard Pro 2 (355A910)
PowerGuard Pro Mobile 2 (355A920)

PowerTest 1557 part no: 328A910
PowerTest 1557 Professional PowerSolutions Pro part no: 371A910
PowerTest 1557 Professional PowerSolutions Mobile part no: 371A920

IRT 1557

Insulation Resistance and Continuity Tester.

The Engineer's ideal companion.

Handheld	Lightweight
Long battery life	Large backlit LCD
16th/17th Edition compliant	Continuous test mode
Ideal users: ■ Electricians ■ Telecomms Engineers ■ Power System Engineers ■ Electrical Contractors	

The IRT 1557 is a small, lightweight insulation resistance and continuity Tester. Handheld, it's a superb addition to any test engineer's toolkit. It performs measurements according to BS 7671, 16th/17th Edition Wiring Regulations and Part P. Seaward's unique integrated safety probe puts the LCD and test probe in the user's line of sight whilst making measurements, no other Tester does this. IRT 1557 is fully compliant with EN 61557 and IEC 61010-1 600v CAT III. Automatic discharge of capacitive circuits, it gives you automatic warning of the presence of hazardous voltages. It comes with an easy to use rotary setting switch. The IRT 1557 offers a number of unique features, including voltage measurements up to 1000AC or DC and a dual safety rating. With incredible robustness the IRT 1557 provides all the tests you need with a safe feel.



TESTS

Insulation Resistance

Display Range	0.001Mohm - 1999Mohm
Analogue Bar Graph	0ohm - infinity
Test Voltage	250v; 500v; 1000v
Nominal Current	1mA minimum per EN 61557
Audible/Visible Warning	Inhibited if 30 V AC or DC at inputs

Continuity

Display Range	0.00ohm - 19.99ohm
Open Circuit Test Voltage	4V DC nominal
Test Current	200mA,
Audible and Visible warning	Inhibited if 30 V AC or DC at inputs

Resistance

Display Range	0ohm - 2000ohm
Test Current	25uA nominal
Audible and Visible warning	Inhibited if 30 V AC or DC at inputs

Voltage

Display Range	0V - 1000V DC/AC to 400Hz
Analog Bar Graph	0 - 1000V
Audible/Visible Warning	30 V AC or DC at inputs

ADDITIONAL INFORMATION

Safety rating	IEC 61010-1, 600V CAT III / 1000V CAT II
Weight & Dimension	0.8kg / 26cm x 10cm x 5.5cm
Compliance	EN 61557-1, -2, -4, -10

ACCESSORIES

Hardware

PowerCheck 1557 (369A910)

Software

PowerGuard Pro 2 (355A910)
PowerGuard Pro Mobile 2 (355A920)

IRT 1557 part no: 365A910

ERT 1557

A new high specification Earth Resistance Tester.

Current clamp measurement

Earth resistance measurement

Battery powered

Download to PC

Store up to 500 records

2, 3, or 4 wire measurement

Ideal users:

■ Telecomms Engineers

■ Power Systems Engineers

■ Electricians

■ Electrical Contractors

Suitable for use on 110 v, 230 v and three phase electrical systems, this special lightweight unit provides accurate Earth electrode resistance measurement without disconnecting the electrode. It can also be used to measure soil resistivity. Earth resistance measurement is carried out using 2,3 and 4-wire method. The ERT has an internal memory for 500 test results which you can download to your conventional PC. Its user-friendly features include a large rotary dial for test selection, large LCD and simple push button test activation. The unit is supplied with four Earth spikes and full test lead set. The ERT is one of the most competitive Earth resistance Testers on the market.

**17TH
EDITION
COMPATIBLE**



**THIS
PRODUCT
IS CARBON
NEUTRAL**

TESTS

Earth Resistance 2, 3 and 4 wire method

Display Range	0.00ohm - 50.0kohm
Measuring Frequency	125 Hz +/- 1 Hz
Measuring Current	<20mA effective
Measuring Voltage	<50V effective sine wave

Earth Resistance using current clamp

Display Range	0.0ohm - 2.00kohm
Measuring Frequency	125 Hz +/- 1 Hz
Measuring Current	<20mA effective
Measuring Voltage	<50V effective sine wave

Specific Earth resistance (p)

Display Range	0.00ohm – 1999kohm
Measuring Frequency	125 Hz +/- 1 Hz
Measuring Current	<20mA effective
Measuring Voltage	<50V effective sine wave

ADDITIONAL INFORMATION

Weight & Dimensions	0.8kg / 26cm x 10cm x 55mm
Memory	500 memory locations
Communication	USB
Compliance	EN 61557-1, -5, IEC61010-1, 300V CAT II

ACCESSORIES

ERT Current Clamp (278A912)

ERT 1557 part no: 362A910

POWERCHECK 1557

A complete PAT and Installation instrument verification system.

Rugged and robust	Tests to BS 7671/EN 61557
Confirm performance	NICEIC & IET compliant
Does not trip RCDs	Compatible with all testers
Ideal users: ■ Electricians ■ Service Engineers ■ Electrical Contractors	

The PowerCheck 1557 is a full instrument verification system in one rugged, drop-proof enclosure. It tests to BS 7671, BS EN 61557 and IET on-site Guide. It has full instrument verification against all relevant standards and confirms performance between verifications (this is information required by NICEIC, ELECSA, Corgi and others).

PowerCheck tests for Full Earth Continuity, Insulation Resistance, RCD Trip Time, RCD Trip Current and Loop Verification.



SPECIFICATIONS

Earth Continuity Verification

Test current	In >200mA indication
Test voltage	4V < Un > 24V indication
Test resistances	0.5ohm and 2ohm

Insulation Resistance Verification

Open circuit test voltage:	250V < Un < 375V indication 500V < Un < 750V indication 1000V < Un < 1500 indication
Test current	In >1mA into 1000ohm/V
Max test current	Ik <2mA
Test resistances	0.25Mohm, 0.5Mohm, 1.0Mohm

Earth Loop Verification

Test values	Loop, Loop+1ohm, Loop+180ohm
-------------	------------------------------

RCD Verification

Trip current	10mA, 30mA, 100mA
Trip Times	20ms, 40ms, 500ms
Test current multiplier	1/2Δn, IΔn and 5 IΔn verification

Voltage Verification

Test Voltage	240V AC rms test output
--------------	-------------------------

PAT FUNCTIONS

Earth continuity verification

Test resistances	0.2ohm and 2ohm
------------------	-----------------

Insulation Resistance verification

Test resistances	500kohm, 1Mohm and 2Mohm
------------------	--------------------------

PE Conductor current

Test currents*	0.1mA, 0.25mA and 0.5mA
----------------	-------------------------

Flash Test current

Test currents*	0.5mA, 1mA and 1.5mA
----------------	----------------------

ADDITIONAL INFORMATION

Power supply	230V AC ±10%
Weight & Dimensions	1kg / 21cm x 14.5cm 8.5cm

PowerCheck 1557 part no: 369A910

CHECKBOX 17 PLUS

Installation instrument Check Point.

NICEIC & IET compliant

17th Edition testing

Continuity and insulation check

Proving voltage

Loop and RCD test

Compact



The CheckBox 17 Plus is a convenient Installation Instrument Check Point. It is a versatile compact instrument which is designed to provide a convenient check point for installation test instruments including Earth Loop Testers, Insulation Continuity Testers and RCCB Testers. The CheckBox 17 Plus provides a convenient and simple method of confirming the functionality and accuracy of Installation Tester readings as required for NICEIC inspections.

The CheckBox 17 Plus checks all Seaward and most other manufacturer's installation test instruments.

SPECIFICATIONS

Tests Performed

Continuity check against precision 1ohm and 10ohm
Insulation check against precision 1Mohm
Earth Loop Impedance/Resistance check against 5ohm
RCD 60mS Trip Time and 30mA test current check
Voltage measurement check 45 — 85v a.c. specific value for each unit

ADDITIONAL INFORMATION

Power Mains 230V 50Hz
Weight & Dimensions 0.44kg / 18cm x 4.4cm x 9.6cm

Checkbox 17 Plus part number: 295A914

PROVING UNITS

Prove the voltage indicating ability of potential indicators, test lamps and multimeters.

The Seaward range of proving units are designed to suit a wide range of customers and are in extensive use with power utilities, electrical contractors and industrial engineers.

Wherever safety depends on the ability of an instrument to indicate if a circuit is live or isolated the Seaward proving units are an ideal independent source of voltage to proof check the device before and after use.

PPX AND PP1

PPX and PP1 provide a nominal 240 volt DC output at approximately 20 milliamps. These instruments are ideal for all types of voltage indicators including LCD, LED and filament bulb type. Supplied with a rugged carrying case with the PPX incorporating a belt clip. Simple and convenient use in the field. Powered by 4 x AA alkaline cells.

PPX part number: 112A910

PP1 part number: 112A911

PP2

PP2 is a proving unit designed for mounting within vehicles. This instrument is powered from the vehicle's 12 volt supply and provides a nominal 240 volt DC output ideal for all engineers working in the field who require a readily available independent source of voltage.

Powered by 1 x PP3 alkaline cell.

PP2 part number: 112A912

PP24a

PP24a is a lightweight compact proving unit providing a nominal 240 volt output at a nominal 2 milliamps. This device is ideal for a wide range of voltage indicators including LED, LCD and multimeters. Powered by 1 x PP3 alkaline cell.

PP24a part number: 112A919

PH3

PH3 is a highly portable, battery powered proving unit for proving high voltage indicators, live line testers and digital potential indicators. This proving unit produces a DC output voltage for confirming the operation of voltage indicators before and after use. Designed for use with the KD1E/19 and other instruments with flat contact electrodes.

PH3 Part Number: 112A913

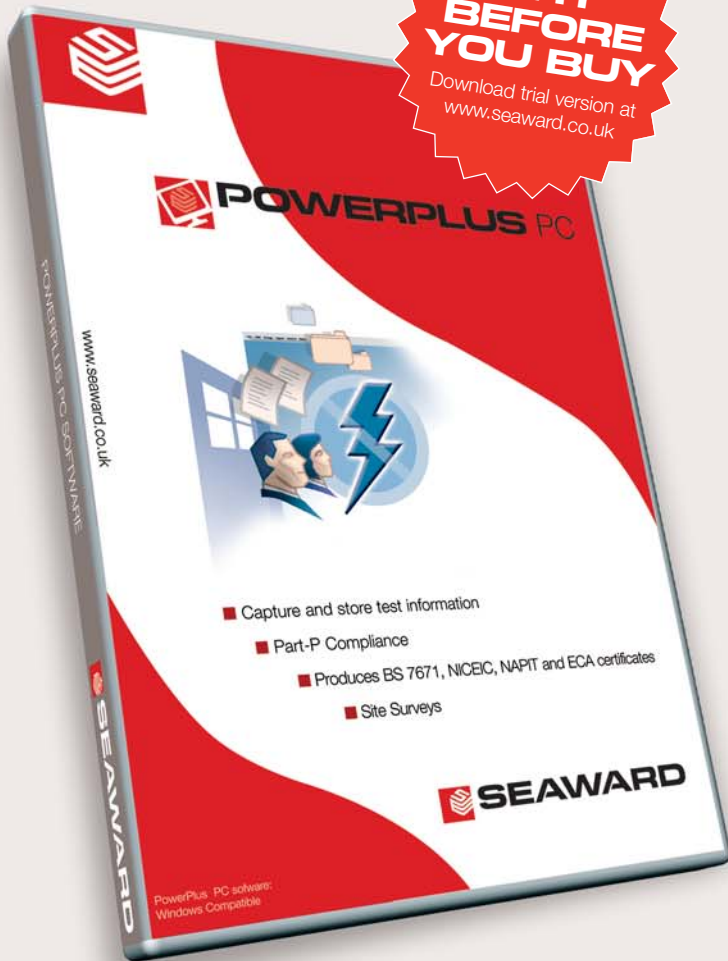


POWERPLUS PC SOFTWARE

Produce 17th Edition Certificates faster.

Complete certificates faster	Certificate validation
Upload/download to PP1557	Direct input of certificate info
Intelligent data system	Save time & money
Ideal users: ■ Electricians ■ Electrical Contractors	

TRY BEFORE YOU BUY
Download trial version at www.seaward.co.uk



The PowerPlus PC is a Test & Inspection software program designed to work best in conjunction with the PowerPlus 1557 installation tester. The PowerPlus PC software allows you to select from a range of Installation Certificates, enter installation details including Certificate number, and upload to the PowerPlus 1557 tester. Once testing is complete, the information is transferred from the PowerPlus 1557 to the PowerPlus PC software using Bluetooth transfer.

The PowerPlus PC intelligent data system will then populate the correct fields with the test and inspection information from the PowerPlus 1557 tester. A validation check will ensure the information is consistent and complete. Incomplete or inconsistent information will be highlighted.

The information can then be printed direct onto NICEIC, NAPIT and ECA certificates. Alternatively, BS 7671 or Part-P forms can be printed onto plain paper or emailed as a PDF. The Installation information as well as individual Certificates is stored for use with future test and inspections.

Part no: 375A910

SPECIFICATIONS

The following Certificates are available in the program:

NICEIC
ECA
NAPIT
BS 7671
Domestic Electrical Installation
Domestic Periodic Inspection
Minor Electrical Installation Works Domestic
Minor Electrical Installation Works Industrial
Electrical Installation
Periodic Inspection for Electrical Installation
Domestic Visual Condition

ADDITIONAL INFORMATION

System Requirements

IBM Compatible PC
Processor Speed 500Mhz or higher
Microsoft Windows XP/Vista
32 bit operating systems
512MB RAM minimum
50MB available hard disk space
Colour monitor with 32 bit colour or greater video card
CD ROM drive
USB 2.0 Port

HIGH VOLTAGE

Total Test Solutions.

Contents

- 58 - 59 High Voltage Safety
- 60 - 61 High Voltage Indicators
- 62 - 63 High Voltage Phasing Units
- 64 Halo Hook
 - 65 Type L Plus
- 66 SD 300
 - 67 AGL - 5
- 68 - 69 Professional Advice



HIGH VOLTAGE SAFETY

Twenty five years of the safest,
most reliable high voltage
equipment in the World.

Seaward's experience in designing and manufacturing high voltage test equipment is second to none, and is recognised as such around the World. But that's not all. We're also acknowledged as a company which understands how its customer companies work on the shop floor. Ideally, our staff like to know as much about the job in hand as the client. When the bottom line in safety is human life, there is simply no room for error.

Seaward products are used globally and renowned for their reliability, accuracy, and robust construction. Seaward's expertise, after sales service and calibration facilities are similarly highly prized worldwide. Our High Voltage Test and Measurement range gives our customers a comprehensive choice for power distributors, the industries which support them, rail networks and the petrochemical industry.

Seaward's range is fully compliant with international safety standards.

All our instruments are designed and manufactured in accordance with the requirements of IEC 61243.

We manufacture ergonomically designed portable potential indicators, capacitive voltage indicators, neon and digital phasing units, insulator leakage detectors, current clamps, discharge units and earthing and shorting equipment. Our products are available for systems voltages up to 33kv.

Put simply, Seaward is the solution to your high voltage requirements.





HV INDICATORS

Portable, neon and digital potential indicators for confirming voltage on earthed neutral systems.

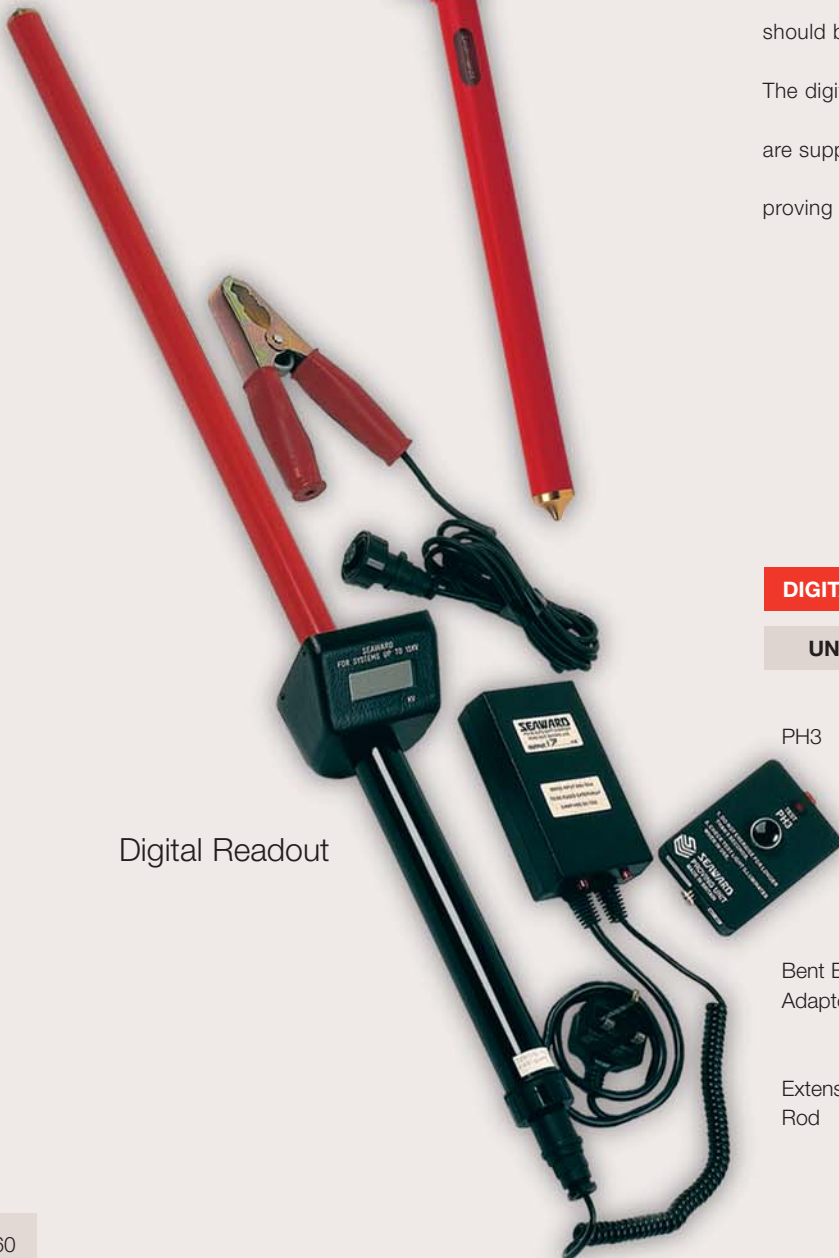
Neon Indication



These instruments let you confirm the presence of voltage on Earthed neutral electrical systems. They conform in design lengths to the recommended creepage and safety standards. Each model features high grade PVC tubing and incorporates encapsulated resistor chains. There's a PH3 proving unit for additional safety and should be used before and after the voltage indicator's used.

The digital reading instruments provide voltage measurements and are supplied with detachable earth lead, battery charger and PH3 proving unit.

Digital Readout



DIGITAL READOUT ACCESSORIES

UNIT	FEATURES	PART NO.
PH3	<ul style="list-style-type: none"> ■ Proving unit for proof testing high voltage indicators ■ High voltage output 1200V -1500DC ■ Self test facility ■ Avoids use of known supply points or bulky test equipment 	112A913
Bent End Adaptors	<ul style="list-style-type: none"> ■ 90° standard, 120° on request ■ Suitable for use on vertical type switchgear 	141A900 (specify degree)
Extension Rod	<ul style="list-style-type: none"> ■ 1.5m extension rod for use on overhead lines ■ Suitable for use with KDIE/15D, KDIE/33D, PR15D and PR33D 	141A901

DIGITAL READOUT SPECIFICATIONS

Features

- Use as a potential indicator to determine presence of voltage or as a voltmeter
- Robust display housing
- No switches
- Provides direct reading of voltage measurements
- Low battery indicator
- Supplied with battery charger
- Specifically designed carrying case for unit and accessories

Unit	System Voltage*	Features	Part No.
KDIE/15D	15KV max	Resolution-10V	109A910
KDIE/33D	33KV max	Resolution-100V	109A911

*Earthed neutral system

NEON INDICATION SPECIFICATIONS

Features

- Duplicate neon indicators within shock resistant sleeves
- Permanently connected earth cable
- Hand guards on all elements
- Direct access to vertical or horizontal metal clad switch gear
- UK Electricity Council Approval list G9

Unit	System Voltage*	Features	Part No.
KDIE	1KV-11.5KV		113A916
KDIE/KAD	1KV-11.5KV	KAD Audio Alarm	113A915
KDIE/19	1.5KV-19KV		113A914
KDIE/19S	1.5KV-19KV	AC Voltage	113A913
KDIE/22	3KV-22KV		113A912
KDIE/33	3KV-33KV		113A911

Indicator Type ▶	Neon Indication					Digital Reading	
Indicator Type ▶	KD1E	KD1E/19	KD1E/19S	KDE1/22	KDE1/33	KD1E/15D	KD1E/33D
Maximum System Voltage	11kV	19kV	19kV	22kV	33kV	15kV	33kV
Maximum Voltage to Earth	6.6kV	11kV	11kV	12.5kV	19kV	8.6kV	19kV
Threshold Voltage	300V	300V	300V	300V	300V		
Measuring Range						0.00kV-8.6kV	0.00kV-19.0kV
Resolution						10V	100V
Sensitivity	AC/DC	AC/DC	AC Only	AC/DC	AC/DC	AC/DC	AC/DC
Circuit Current (IEC 61234-2)	2.3mA nominal 6.6kV	0.7mA nominal 11kV	0.9mA nominal 11kV	3.5mA nominal 12.5kV	1.1mA nominal 19kV	0.5mA nominal 8.6kV	1.1mA nominal 19kV
Dielectric Leakage Current (IEC 61234-2)	7µA nominal @13.8kV	11µA nominal @ 22.8kV	12µA nominal @ 22.8kV	12µA nominal @ 26.4kV	17µA nominal @ 40kV	9µA nominal @ 18V	17µA nominal @ 140kV
Length (mm)	330	330	330	665	670	600	600
Diameter (mm)	25	25	25	25	25	25	25
Handle Length (mm)	105	105	105	90	250	235	235
Hand Guard Height (mm)	23.5	23.5	23.5	23.5	23.5	23.5	23.5
Contact Electrode Type	Domed	Flat	Flat	Domed	Flat	Domed	Domed

Extension Rods ▶	1.5m Straight	90°	120°
Maximum System Voltage	33kV	15kV	33kV
Dielectric Leakage Current	140µA nominal @ 40kV	50µA nominal @ 18kV	130µA nominal @ 40kV
Length	150cm	78cm	78cm
Diameter	2.5cm	2.5cm	2.5cm
Contact Electrode Type	"V" form	Domed	Domed

HV PHASING UNITS

Phase comparison equipment.



PR11

The PR11 provides a means of phase comparison at the point of paralleling two circuits, without the interposition of voltage transformers or secondary wiring earthed neutral systems. A neon type instrument, it is designed for use on earthed neutral systems up to 11KV. The PR15D / PR33D units enable phase angle comparison on Earthed neutral systems up to 15KV and 33KV respectively.

The digital reading instruments provide voltage measurements and are supplied with detachable Earth lead, allowing the digital leg to be used as a voltage indicator, independently from the phasing leg.

PR15D/PR33D



PR15D / PR33D ACCESSORIES (INCLUDED)

- 1 x Proving unit
- 1 x Battery charger
- 2 x Overhead line extensions (1.5m)
- All leads and instructions
- Supplied with carrying case
- Bent adaptors available for use with switch gear

PR15D / PR33D SPECIFICATIONS

FEATURES

- Provides a means of phase angle comparison and indication of phase angle voltage at the point of intended paralleling of two circuits on neutral Earthed systems. Both units are digital instruments
- Chart provides a means of checking phase angle difference of circuits paralleled
- Kit comprises two elements with resistor chains, one with digital indicator and the second a phasing rod

UNIT	VOLTAGE*	FEATURES	PART NO.
PR15D	15kV max	Resolution-10V	109A912
PR33D	33kV max	Resolution-100V	109A913

*Earthed neutral system

PR11 SPECIFICATIONS

FEATURES

- For use on 1kV to 11.5kV systems
- PVC hand guards on handles of elements
- Neon indicator enclosed in shock resistant sleeve
- Direct areas possible to all types of switch gear
- Complies with UK Electricity Council Engineering recommendation G9

Part No: 113A910

Indicator Type ▶	Neon Indication	Digital Reading			
Indicator Type ▶	PR11	PR15/D Digital Leg	PR15/D Phasing Leg	PR33D Digital Leg	PR33D Phasing Leg
Maximum System Voltage	11kV	15kV	15kV	33kV	33kV
Maximum Voltage to Earth	6.6kV	8.6kV	8.6kV	19kV	19kV
Threshold Voltage	300V				
Measuring Range		0.00kV - 8.6kV		0.00kV - 19.0kV	
Resolution		10V		100V	
Sensitivity	AC/DC	AC/DC		AC/DC	
Circuit Current (IEC 61234-2)	0.9mA nominal @11.5kV	0.5mA nominal @15kV	0.5mA nominal @15kV	0.9mA nominal @33kV	0.9mA nominal @33kV
Dielectric Leakage Current (IEC 61234-2)	25µA nominal @13.58kV	7µA nominal @ 18kV	7µA nominal @ 18kV	23µA nominal @ 40kV	17µA nominal @ 40kV
Length	33cm	60cm	67cm	60cm	67cm
Diameter	2.5cm	2.5cm	2.5cm	2.5cm	2.5cm
Handle Length	10.5cm	23.5cm	24cm	23.5cm	24cm
Hand Guard Height	23.5cm	23.5cm	23.5cm	23.5cm	23.5cm
Contact Electrode Type	Domed	Domed	Domed	Domed	Domed

* See page 67 for extension rod specifications

HALO HOOK

Ammeter for overhead powerlines.



A portable open core current transformer for accurately measuring high voltage conductor current flow in a range of 0 to 2000 amps and is suitable for use on system voltages of up to 36kV. The instrument is applied using appropriate insulated operating poles, which quickly and simply affix to the base of the instrument with a 'universal spline' attachment. Hooking the Halo around the conductor, the peak reading of the rms current can be stored on a large clear LCD display and retained until reset. Typical applications include spot load surveys, phase balancing on primary and secondary circuits and monitoring of current flow through high voltage fuses to establish their integrity. The rugged design makes this instrument ideal for field use and is used by power utilities throughout the world. Padded carrying case and full instructions included.

SPECIFICATIONS

FEATURES

- Lightweight 1.28 kg
- Take spot checks quickly and easily
- Moulded plastic head for conductors up to 5.8cm in diameter
- For use on overhead or underground applications
- Peak hold and track modes
- Auto-ranging LCD display
- True RMS reading
- Display 3.5 digit LCD
- Max. Amperes: 1999 Min. Amperes: 0.1
- Display response time: 3 seconds to full scale
- 3% off reading \pm 1 digit accuracy:
- Temperature Range: 0°F – 122°F (-18°C - 50°C)
- Auto shut off
- Operating humidity range: 80% RH at 120°F
- Maximum voltage: 36kV AC (phase to phase)
- Replaceable 9V alkaline battery- 40+ hours continuous operation
- Membrane type, tactile response control panel
- Dimensions core opening: 5.8cm x 9.4cm

Part No: 205A910

TYPE L PLUS

Large jaw clamp meter.

Specially designed for applications involving the measurement of current flow through large conductors. With a Jaw size of 100mm diameter the type L is ideal for measuring current flow through porcelain fuse carriers in feeder pillars, large diameter conductors and a variety of other applications. The instrument measures current using precision Air Core current sensor technology and has been designed to minimise the use of metallic components aiding safe working practises. Measuring current up to 2000 amps, with both a Tracking and a Store mode for operating to either monitor current on a continually varying basis, or store the maximum reading when operating in confined conditions. Used worldwide by power authorities for aiding productive and safe working. Package includes meter, carrying case, operating instructions.

SPECIFICATIONS

FEATURES

- 3.5" digit LCD display with 1.2cm high characters
- 0 – 2000 amps measurement range
- 50 – 600 volts AC 50 HZ voltage range
- 10cm x 14cm internal Jaw dimensions
- 0°C - +40°C operating temperature range
- - 20°C - +°C storage range
- 9 volt PP3 IEC number 6LF22 battery
- 3% accuracy of full scale on all ranges for a conductor positioned at the centre of the jaws



Part No: 275A910

SD 300

Safe discharge of stored electrical energy.

Applications: ■ Power Factor Connection Capacitors
■ DC Drive Capacitors



There is nothing quite like the SD 300 available in the current market. Specifically designed to enable you to discharge stored energy safely from large capacitors. These capacitors store potentially lethal amounts of energy and must be safely discharged before service or maintenance is carried out. The common, unauthorised practice is to discharge this energy with screwdrivers or wires prior to maintenance, test or repair work. This can cause uncontrolled sparking and is extremely dangerous. It can also damage capacitors. The SD 300 has a unique failsafe two handed push-button operation which initiates and maintains the discharge. It ensures that the operator never comes into contact with the live circuit. It's a safety must.

SPECIFICATIONS

FEATURES

- Unique failsafe design
- Electrical isolation between probes
- Two handed operation
- Self test facility
- Rugged drop proof enclosure
- 1000V maximum discharge voltage
- 1200 μ F maximum discharge capacitance
- 30s nominal discharge time @ 1000V/1200 μ F
- Safety Interlock discharge inhibited if >30V AC between test probes
- Centre-zero panel meters and LED indicators
- 33.9cm x 29.5cm x 15.2cm
- Only 4kg
- IP66 IP rating
- UL listed

Part No: 357A910

NEW

AGL-5

Airfield Ground Lighting Voltage Detector

SEAWARD
Experts in what we do.

The Seaward AGL-5 is a two pole voltage detector designed specifically for use with airfield ground lighting systems. The instrument indicates the presence of voltages greater than 50V AC and is ideal for proving dead on AGL systems up to 5000V. The unit is totally encapsulated in a high impact rugged enclosure and is IP64 rated.

The ultra-bright high intensity red LED indicators and a polarizing filter making it clearly visible in all working environments.

The AGL-5 is supplied complete with a proving unit for proof testing before and after use and a protective carry case.

Rated at 5kV	High visibility indicators
Compliant with all standards	Proving unit included
Carry case included	Compact and portable
Ideal users:	■ Offshore Maintenance ■ ROV Maintenance
	■ AGL Maintenance ■ AGL Manufacturing

SPECIFICATIONS

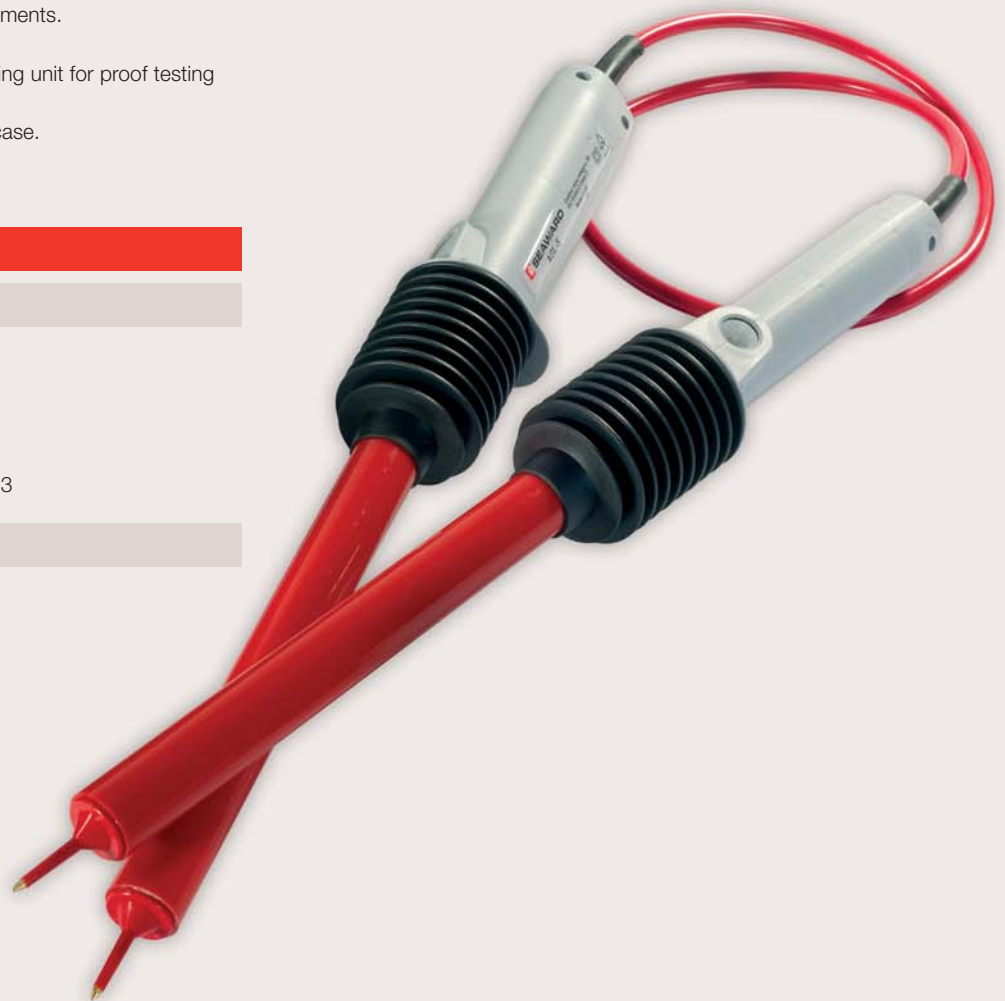
AGL-5 Two Pole Voltage Detector

Working Voltage 5000V DC max
Threshold Voltage 50V AC/70V DC
Circuit Current <3.5mA
Indicator 2 ultra-bright red LED
Compliance IEC 61243-2 and IEC 61243-3

PH3-LLT Proving Unit

Output Voltage 500V DC nominal
Output current 0.45mA into 2kohm
Two non-touchable terminals
Neon 'active' indicator
Compliance BS EN 61010-1

Part No: 374A910



PROFESSIONAL ADVICE

Service which keeps you ahead of the competition.

Testers, Accessories and Software are only part of our safety testing business. We're here to help you as partners. As some of you appreciate, we spend a huge amount of time on your shop floors and working environments.



JumpStart

Sometimes it's important to get a bit of guidance when you're setting up a piece of Seaward equipment. JumpStart's a new, one-on-one service that's designed to get the max from your PAT Testing equipment. A dedicated, experienced professional will visit your site, discuss what you need with you and then set up and configure the instruments, software and establish what training's needed. You'll know everything about the kit by the time we leave.

For full details regarding JumpStart, contact sales@seaward.co.uk or telephone +44 (0) 191 586 3511



Calibration

As you know, without calibration, instruments can't perform the tasks they're supposed to do. We supply a quick calibration service at our Head Office so you can get this sorted out properly. This service is available for Multimeters, Clampmeters, PATs, 16th/17th Edition Testers, EMC and High Voltage Testers, regardless of who manufactured it.

All calibration is carried out to the highest standards and is guaranteed for accuracy as we are UKAS accredited.



Service

Seaward Service Department supports the standard 12 month product warranty which is offered across our product range. In addition to both in and out of warranty repair, service and calibration of the full range of Seaward Group test equipment we can also accommodate the repair and service of other brands of test equipment. Extended product warranties are available, and service requirements can be booked online at www.seaward.co.uk, email service@seaward.co.uk, telephone +44 (0) 191 587 8737 or fax +44 (0) 191 5184666.



Training

If you're serious about Safety Testing, you should seriously consider our Total Solutions package. In a nutshell, this means we don't just make the best equipment, we also supply certified training courses for those who use our products. All our courses are designed to provide faster testing techniques, best practice and the effective use of ancillary equipment. When you've completed our courses, you'll be accredited by Seaward. We also hold courses on our prestigious software packages which help you fully master Test Record Management.

Seaward, Bracken Hill, South West Industrial Estate,
Peterlee, County Durham, SR8 2SW United Kingdom

Tel: +44 (0) 191 586 3511 **Fax:** +44 (0) 191 586 0227
Email: sales@seaward.co.uk **Web:** www.seaward.co.uk



Seaward, Clare, Rigel Medical,
Cropico, Seaward Group USA
are all part of the Seaward Group